



MAHENDRA
COLLEGE OF ENGINEERING



Accredited by Naac | Approved by AICTE, New Delhi | Affiliated to Anna University, Chennai

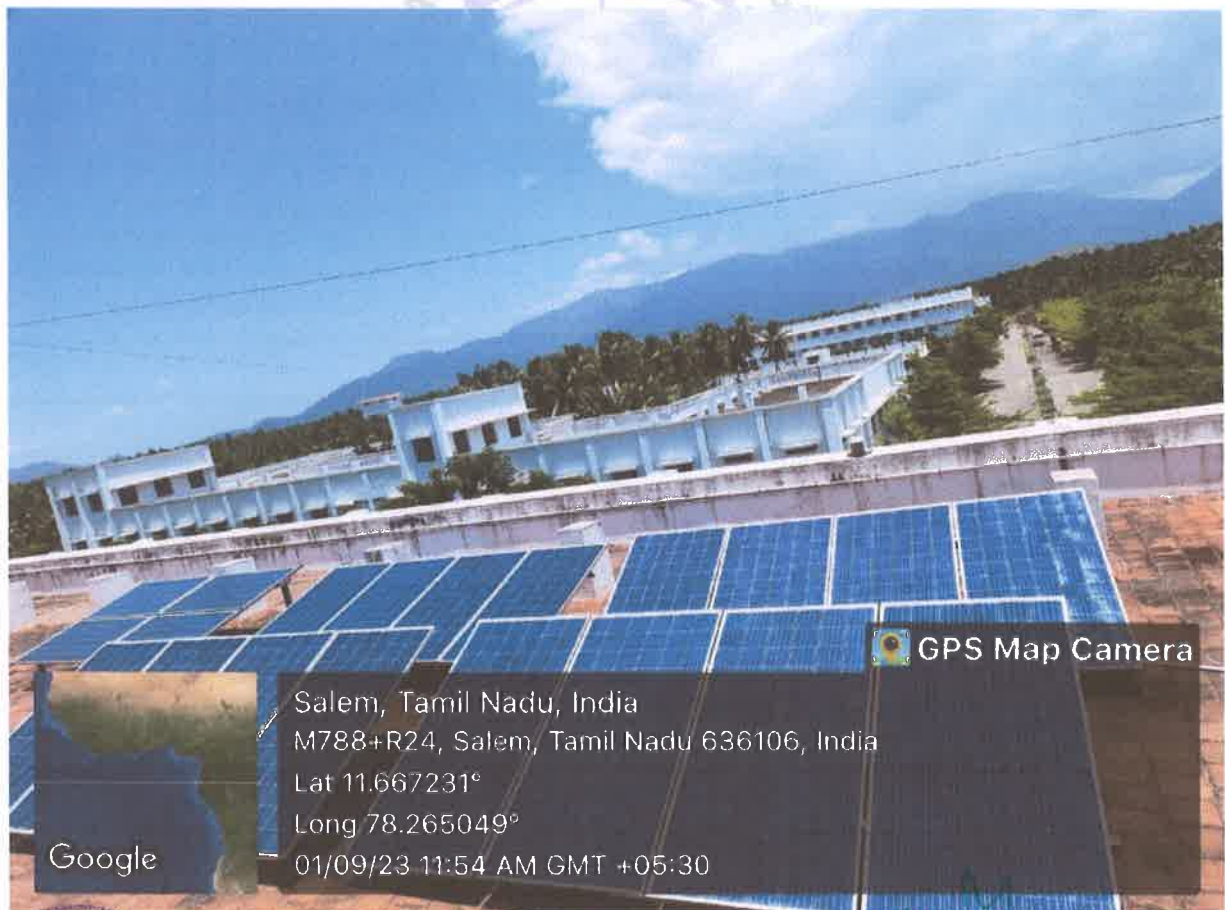
A UNIT OF MAHENDRA EDUCATIONAL TRUST

Alternate Sources of Energy and Energy Conservation Measures



Solar Energy

Present day need and trend is utilizing green source of energy to reduce carbon footprint with sustainable future. The Solar energy is produced by the sun's light - photovoltaic energy offers many benefits that make it one of the most promising energy like Renewable, Inexhaustible, Non-polluting, Avoids global warming, Reduces use of fossil fuels, Reduces energy imports, Contribution to sustainable development. The institution is taken initiative to utilize the solar energy as alternate source of electrical energy. A solar rooftop plant installed at main block, college campus with the capacity of 10KW, as a consequence an amount of Rs5, 64,436 (Five Lakh Sixty Four Thousand Four Hundred and Thirty Six). The Figure shows the solar energy systems installed in the roof top of the institution at various places.



Rooftop Solar Panels

PRINCIPAL
Mahendra College of Engineering
Mahendra Salem Campus,
Minnampalli, SALEM 636 106
TAMILNADU



MAHENDRA COLLEGE OF ENGINEERING



Accredited by Naac | Approved by AICTE, New Delhi | Affiliated to Anna University, Chennai

A UNIT OF MAHENDRA EDUCATIONAL TRUST



GPS Map Camera

Salem, Tamil Nadu, India
M788+R24, Salem, Tamil Nadu 636106, India
Lat 11.667231°
Long 78.265049°
01/09/23 11:55 AM GMT +05:30

Google

Rooftop Solar Panels




PRINCIPAL
Mahendra College of Engineering
Mahendra Salem Campus,
Minnampalli, SALEM 636 106
TAMILNADU



Biogas Plant

To promote renewable sources of Energy and green fuel there is a modern and state of art. The bio-gas produced from food waste, decomposable organic material and kitchen waste, consisting of methane and a little amount of carbon dioxide is an alternative fuel for cooking gas (LPG). Day to day kitchen waste is send to bio gas plant for processing, where the Kitchen waste allows for the production is processed and produces biogas. Eco-friendly technology of renewable natural gas in the form of bio-methane. The facility processes about 500kg of kitchen waste every day. The Figure shows the bio- gas plant available in the institution.



GPS Map Camera



Salem, Tamil Nadu, India

Mahendra college of engineering, M798+52P, Salem, Tamil Nadu 636106, India

Lat 11.668366°

Long 78.264912°

13/09/23 05:55 PM GMT +05:30



Biogas Plant



Solar Energy Wheeling to Grid



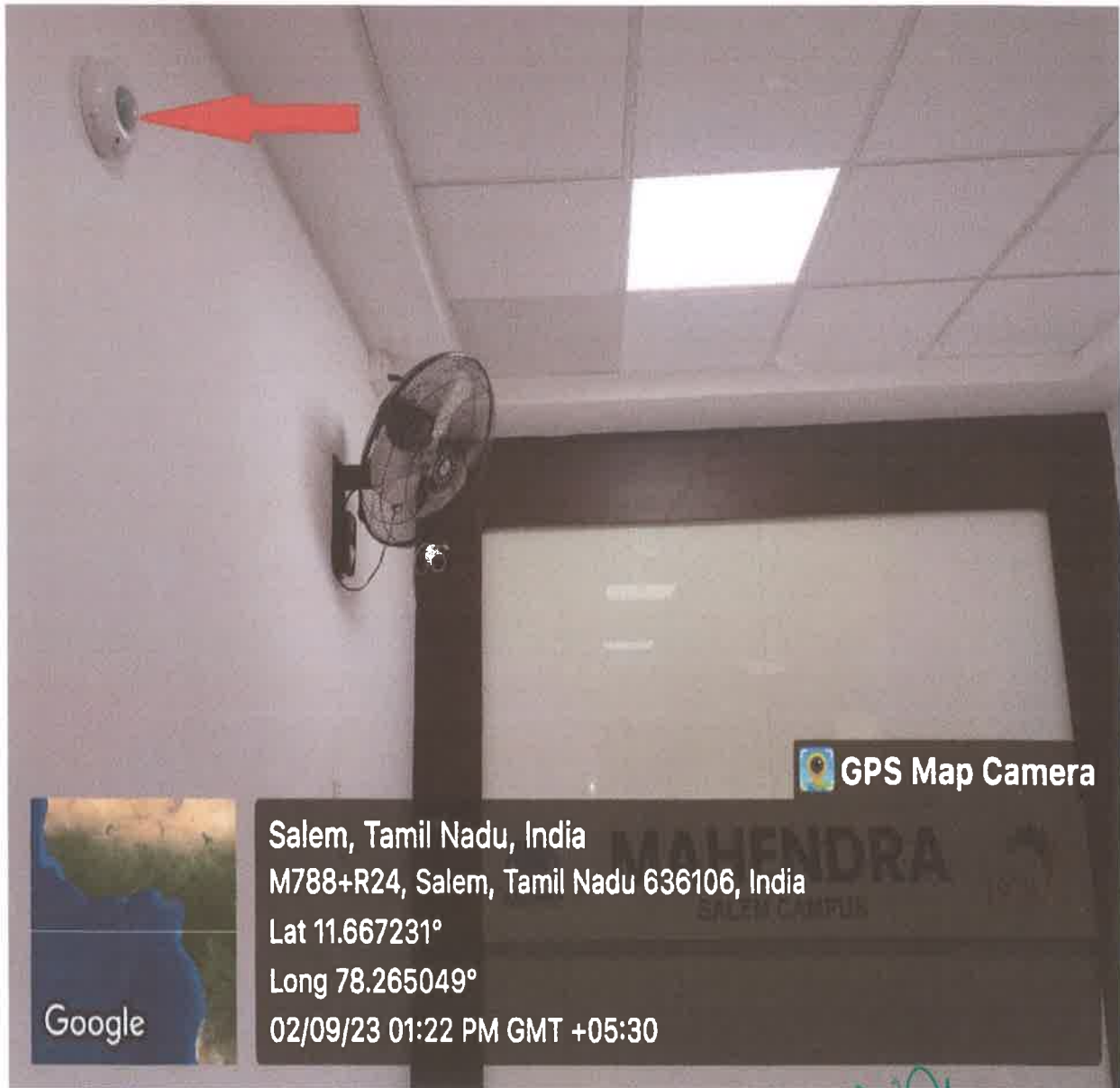
NM
PRINCIPAL
 Manendra College of Engineering
 Mahendra Salem Campus,
 Minnampalli, SALEM 636 10A
 TAMILNADU



Sensor Based Energy Conversion

Sensor Based Light

MCE has installed sensor based lighting facilities saves energy automatically switching on and off. Sensor based lights saves energy by automatically putting off the lights when not in use. The sensors are installed in Administrative office and various places.



GPS Map Camera



Google

Salem, Tamil Nadu, India
M788+R24, Salem, Tamil Nadu 636106, India
Lat 11.667231°
Long 78.265049°
02/09/23 01:22 PM GMT +05:30

6A Motion Sensor



ND
PRINCIPAL
Mahendra College of Engineering,
Mahendra Salem Campus,
Minnampalli, SALEM 636 106
TAMILNADU



MAHENDRA COLLEGE OF ENGINEERING



Accredited by Naac | Approved by AICTE, New Delhi | Affiliated to Anna University, Chennai

A UNIT OF MAHENDRA EDUCATIONAL TRUST



Motion Sensor Outside AO Office

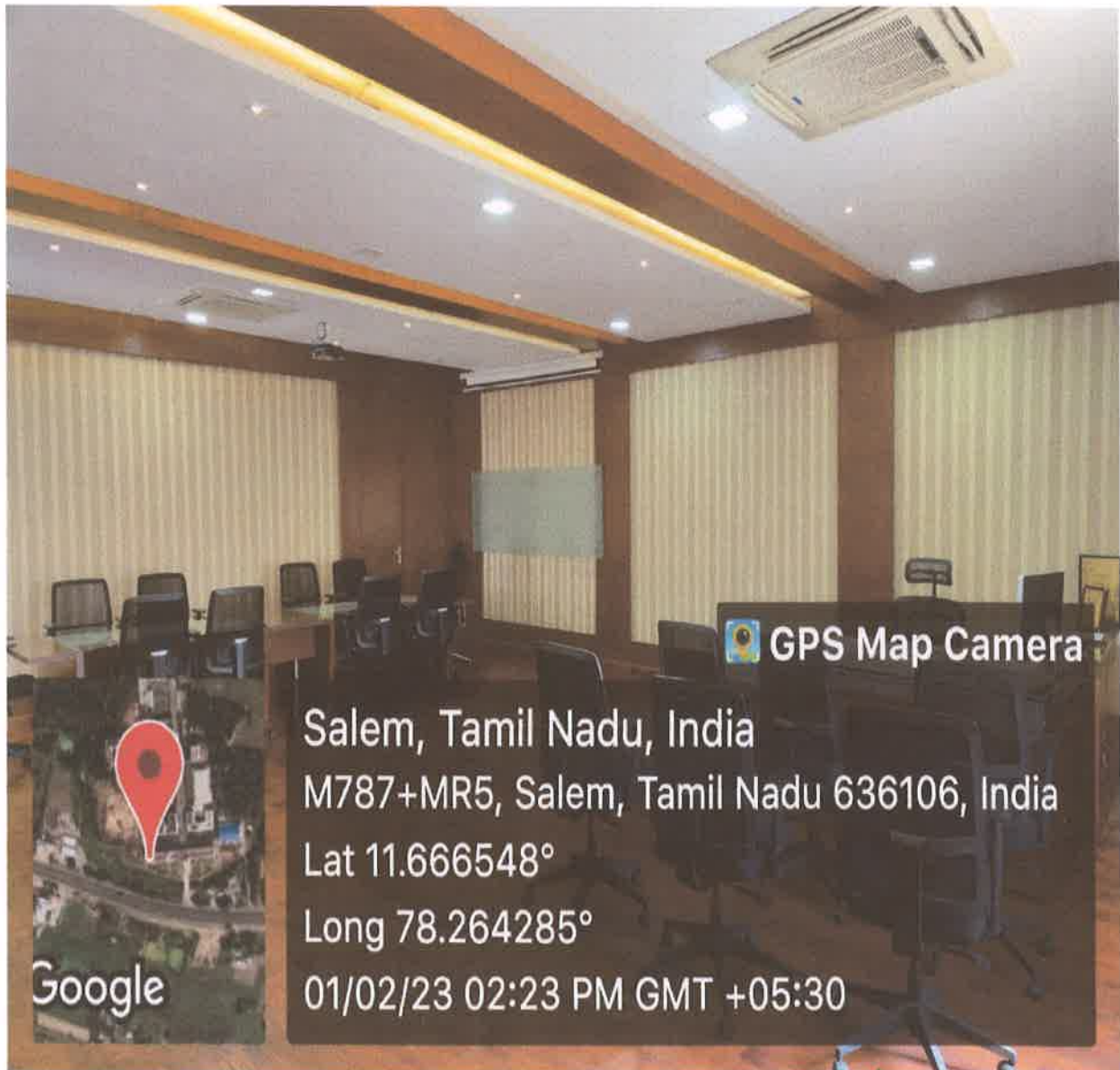
Principal
PRINCIPAL

Mahendra College of Engineering
Mahendra Salem Campus,
Minnampalli, SALEM 636 106
TAMILNADU



Use of Led Lights & Bulbs

The light-emitting diode (LED) is today's most energy-efficient and rapidly-developing lighting technology. Over the past few years, our institution has taken a conscious decision to replace existing lights and lighting equipment by LED sources. Dedicated efforts have been made every year with a sizeable amount being spent on buying and fitting LED lamps and tube lights across the college premises. LED bulbs are placed on the rooftop of Auditorium, seminar hall and various places.



LED Light fittings

NM
PRINCIPAL
Mahendra College of Engineering
Mahendra Salem Campus,
Minnampalli, SALEM 636 106
TAMILNADU

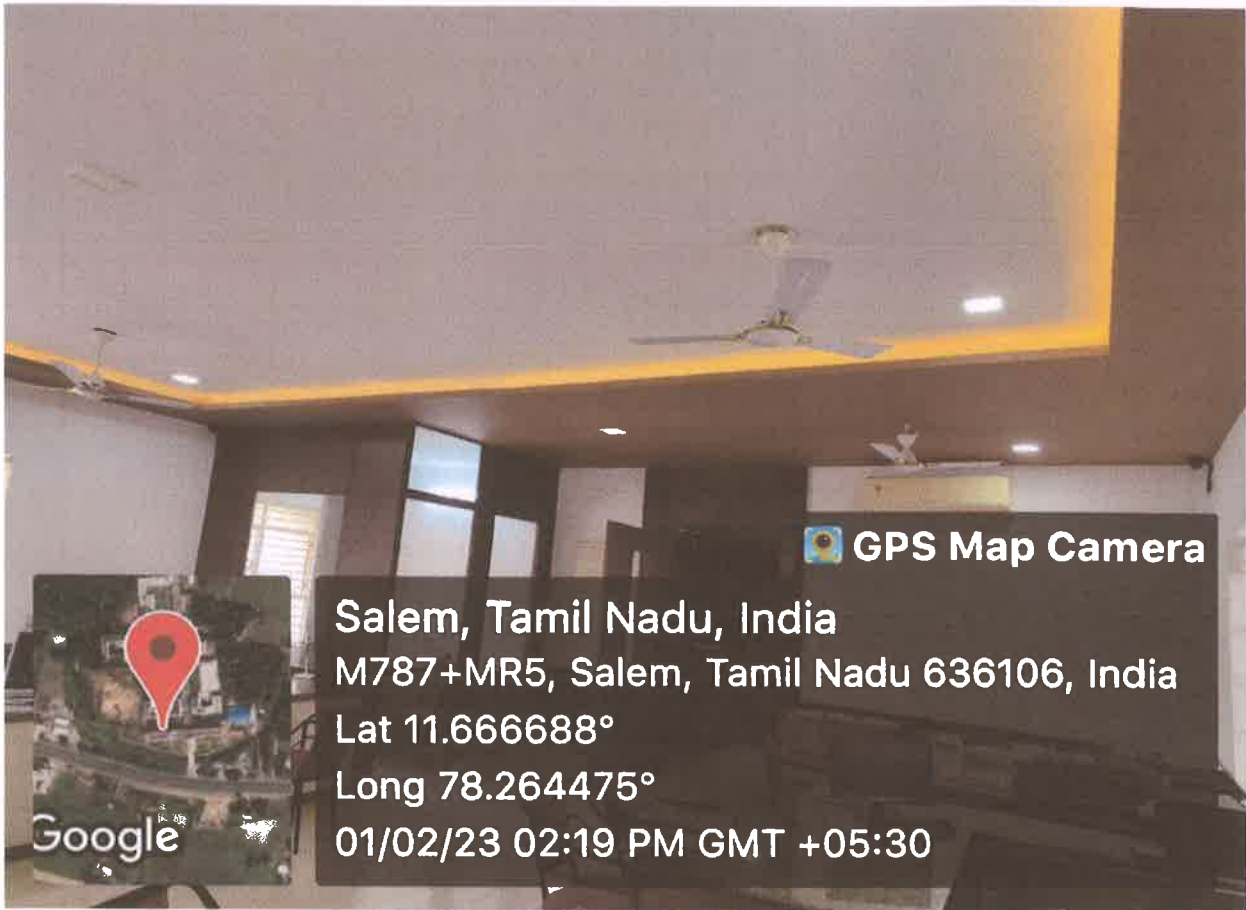


MAHENDRA COLLEGE OF ENGINEERING



Accredited by Naac | Approved by AICTE, New Delhi | Affiliated to Anna University, Chennai

A UNIT OF MAHENDRA EDUCATIONAL TRUST



GPS Map Camera



Salem, Tamil Nadu, India
M787+MR5, Salem, Tamil Nadu 636106, India
Lat 11.666688°
Long 78.264475°
01/02/23 02:19 PM GMT +05:30



GPS Map Camera



Salem, Tamil Nadu, India
M787+MR5, Salem, Tamil Nadu 636106, India
Lat 11.666586°
Long 78.264316°
01/02/23 02:22 PM GMT +05:30



LED Light fittings at Main Block

PRINCIPAL
Mahendra College of Engineering
Mahendra Salem Campus,
Minnampalli, SALEM 636 106
TAMILNADU